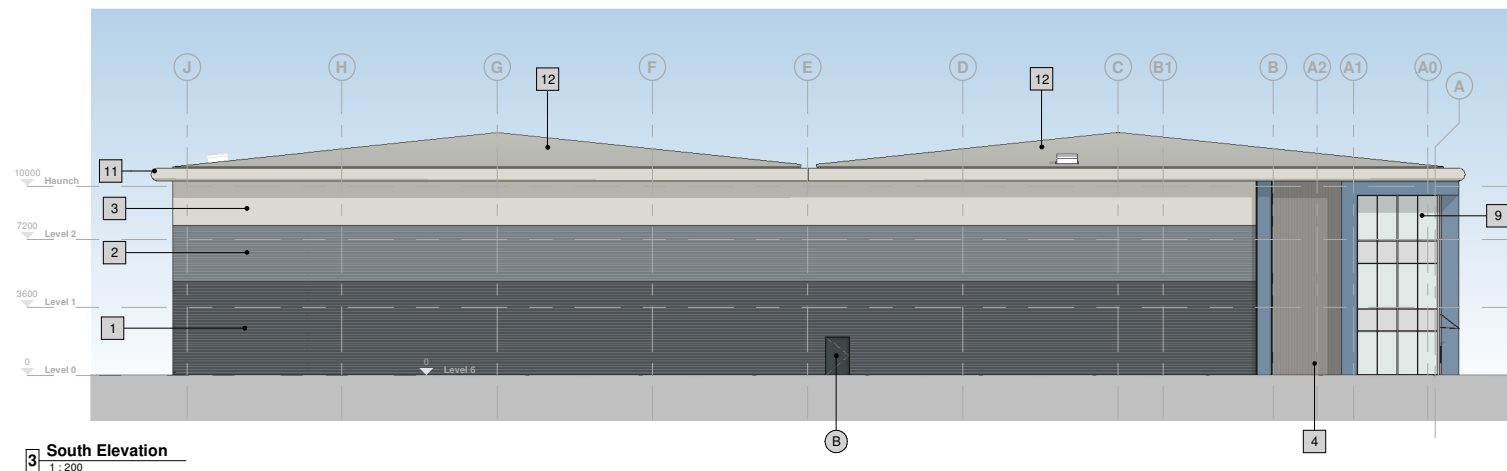


### CONSTRUCTION NOTES

Development proposals are to be read in conjunction with all referenced drawings and documents.

This drawing has been prepared for information and design intent purposes, Refer also to the relevant subcontractors detailed information



1	Wall Type 1 - Built-up metal cladding (twin skinned, insulated) Horizontally Laid Half Round profile - Anthracite (RAL 7016)
2	Wall Type 2 - Built-up metal cladding (twin skinned, insulated) Horizontally Laid Half Round profile - Pure Grey (RAL 000 55 00)
3	Wall Type 3 - Built-up metal cladding (twin skinned, insulated) Horizontally Laid Half Round profile - Hamlet (RAL 9002)
4	Wall Type 4 - Built-up metal cladding (twin skinned, insulated) Vertically Laid Trapezoidal profile - Metallic Iron (RAL 9007)
5	Wall Type 5 - Metal faced composite (sandwich) panel cladding system, micro-rib / satin-line profile - Metallic - Sirius (RAL 9006).
6	Wall Type 6 - Precast concrete (Insulated Infills) to Loading Docks Specialist panels Natural colour / finish
7	Wall Type 7 - Feature Portico Surround - Aluminium Rainscreen folded panels to approved detail on support carrier system - PPC Denim (RAL 5014).
8	Wall Type 8 - Feature Vertical Recess - Aluminium Sheeting with played profile angles to approved detail on support carrier system - PPC Denim (RAL 5014).
9	Wall Type 9 - Aluminium Curtain Wall stick frame system PPC Metallic Iron (RAL 9007) framing, double glazed infills (solar control) - Integral glazed entrance doorset.

P9	Client Issue	AH	23.04.24	JC
C03	Ventilation Extracts added to elevation	AH	21.03.24	JC
C02	Tags added to Elevation	AH	05.03.24	JC
C01	Updated to Construction Status	AH	22.12.23	JC
P8	Preliminary Construction Issue	AH	24.11.23	JC
P7	Coordination Update	AC	11.10.23	JC
P6	Consented Roofline removed	JTJ	31.05.23	BC
P5	Consented Roofline added	BC	30.05.23	BC
P4	Tender Issue Updated	BB	26.10.22	BC
P3	Tender Issue Updated	BB	23.09.22	BC
P2	Tender Issue Updated	BB	21.09.22	BC
P1	Tender Issue added	BB	05.08.22	BC
Rev	Revision Details	Drawn	Date	Checked



**Client**  
BCL (Maple Cross) LLP

**Project**  
Land at Maple Lodge Close,  
Maple Cross, Rickmansworth

Drawing Title

## UNIT 2

Unit 2 - GA Elevations as Proposed

Status	Purpose of Issue
--------	------------------

**A    APPROVED**

Drawn by	BB	Created	June 2022
C4 Job no.	17019	Scale	As indicated @ A1

Drg no. 17019-C4P-U2-ZZ-DR-A-2101	Rev P9
--------------------------------------	-----------